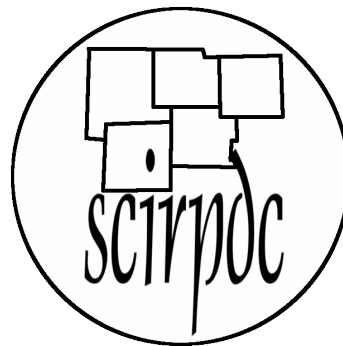


---

# Effingham County Freight Truck Analysis

---



---

South Central Illinois Regional Planning &  
Development Commission

Economic Development District

---

NOTE: This report was modified to only display one County of the SCIRPDC region. The full report can be found at the following URL address:

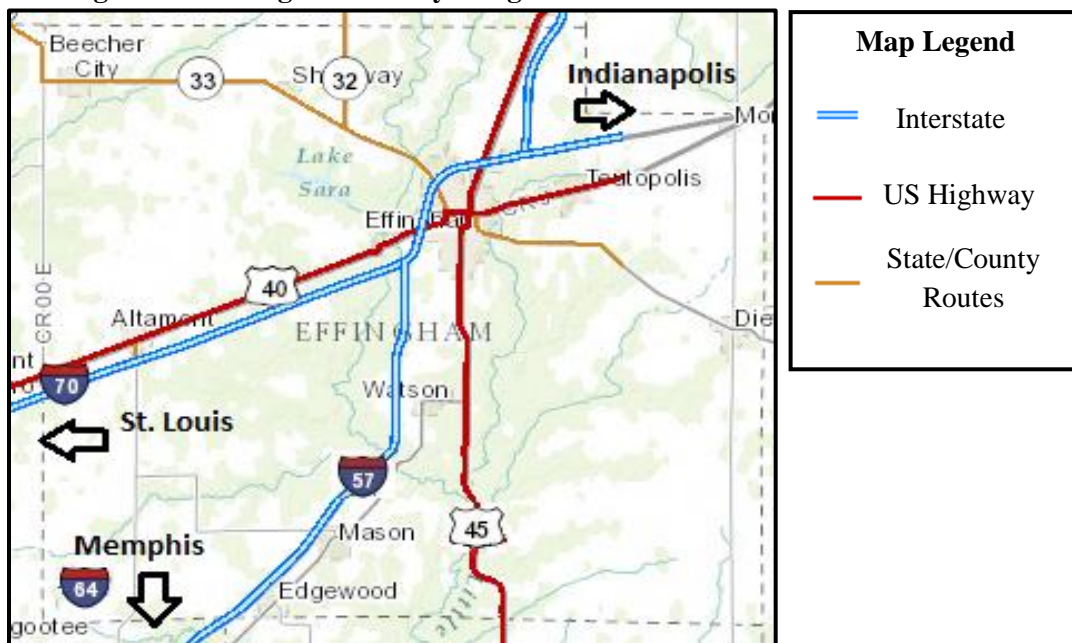
[www.scirpdc.com/Downloads/2015FreightTruckAnalysis.pdf](http://www.scirpdc.com/Downloads/2015FreightTruckAnalysis.pdf)

# IV. Effingham County Freight Truck Analysis

## a. Freight Truck Transportation

Effingham County can be considered both the transportation and industrial hub of the SCIRPDC Region, most notably due to the direct crossing of two major interstates in the City of Effingham, I-57 and I-70, and additionally I-70 provides access to I-64. Effingham County also has two major U.S. Highways, U.S. 40 and 45, which intersect in the center of the City of Effingham. The county is also home to other state and county highways that provide easy access with local municipalities and other bordering counties. **Figure 4-1** provides an illustration of this roadway infrastructure.

**Figure 4-1: Effingham County Freight Truck Access**



Source: ArcGIS, U.S. Department of Transportation

I-57 is a north-south interstate that stretches from Chicago, Illinois to Sikeston, Missouri that connects I-94 in Chicago with I-55 in near Sikeston, Missouri and along the way provides linkages to I-74 in Champaign, Illinois, I-70 in Effingham, I-64 near Mount Vernon, Illinois and I-24, just south of Marion, Illinois. Effingham County is also the crossroads of U.S. 40 and 45. U.S. 45 is a north-south route starting from Lake Superior in Wisconsin and ending at the Gulf of Mexico in Mobile, Alabama. U.S. 40 is an east-west route that stretches from Baltimore, Maryland to Silver Summit, Utah. This particular highway crosses through 12 states and runs parallel with several interstates including I-70, I-64, I-68 (Maryland) and I-95 (Maryland & Delaware).

With the crossroads of I-57 and I-70 as well as U.S. 40 and 45 both centrally located in Effingham County, it is easy to see why it is not only the central transportation and industry hub of the SCIRPDC Region, but also arguably one of the main industry hubs in the entire nation.

## b. City of Altamont Industrial Park

**Figure 4-2** displays the City of Altamont's Industrial Park and provides a map of many of the businesses that are located within it. Altamont has a population just over 2,000 and is located southwest of the City of Effingham. The city's industrial park has wide-range of businesses including retail stores, a fitness center, and a hotel, among many others. Specifically, some of these businesses include Minnesota Limited Inc., who provide pipeline and station services for the oil and gas industry; BK Resources, who provide contractual plumbing services; Landmark Structures Inc., who provide prefabricated wood products; and many others shown on figure 4-2. Currently the Altamont Industrial Park has only six available acres out of a total of 57 in their industrial park. However, this still leaves enough room for continued business expansion to fill the existing available land.

The Altamont Industrial Park is located directly south of I-70 and U.S. Highway 40, giving the businesses located there excellent access to both the St. Louis and Indianapolis metropolitan areas. I-57 is also only a short distance east and provides a close proximity north-south route to go along with the east-west route of I-70.

## c. Village of Dieterich Zumbahlen Industrial Park

The Village of Dieterich is one of the smallest municipalities in the region with an established industrial park with a population of less than 600 according to the 2010 Census. Nevertheless, the Zumbahlen Industrial Park, located at the north-east side of town and shown on **Figure 4-3**, has a total of 52 acres, with a current occupancy of 45 acres, leaving approximately seven acres still available for use. The businesses that are currently located within the industrial park include Advance Powder Technology, providing powder coating to manufacturing companies most notably, Niebrugge Lumber & Agriculture Services, Ideal Machine, among several others.

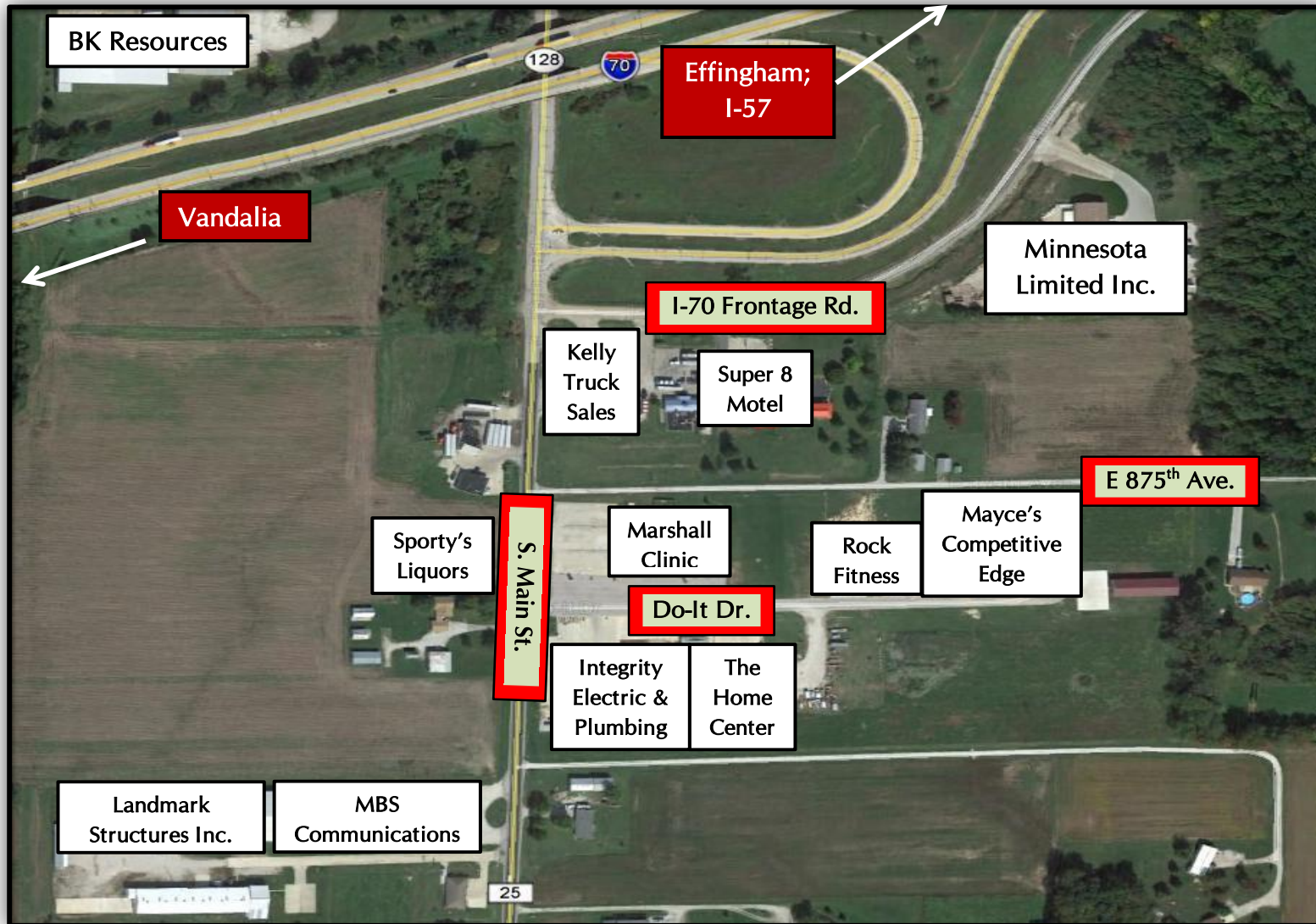
Zumbahlen Industrial Park is located along Illinois Route 33 which stretches from the east of Effingham to the Illinois-Indiana border and provides access to I-57 and I-70 in Effingham. Again, although Dieterich is a rather small municipality, its location does provide excellent access to two major interstate highways and can be a great location for numerous types of industry and businesses.

## d. City of Effingham Industrial and Business Parks

The City of Effingham has a total of four truck accessible business and industrial parks including the Effingham Business Park, South Route 45 Park, American Way Business Park and Network Centre. Within these four parks there is a total approximate acreage of 382, of which currently includes around 80 acres of available land. Maps of these four business and industrial parks are located on **Figures 4-4, 4-5** and **4-6**. These parks include a wide range of businesses and industries including FedEx Freight; Sherwin Williams; Pinnacle Foods; and Heartland Dental, to just name a few examples.

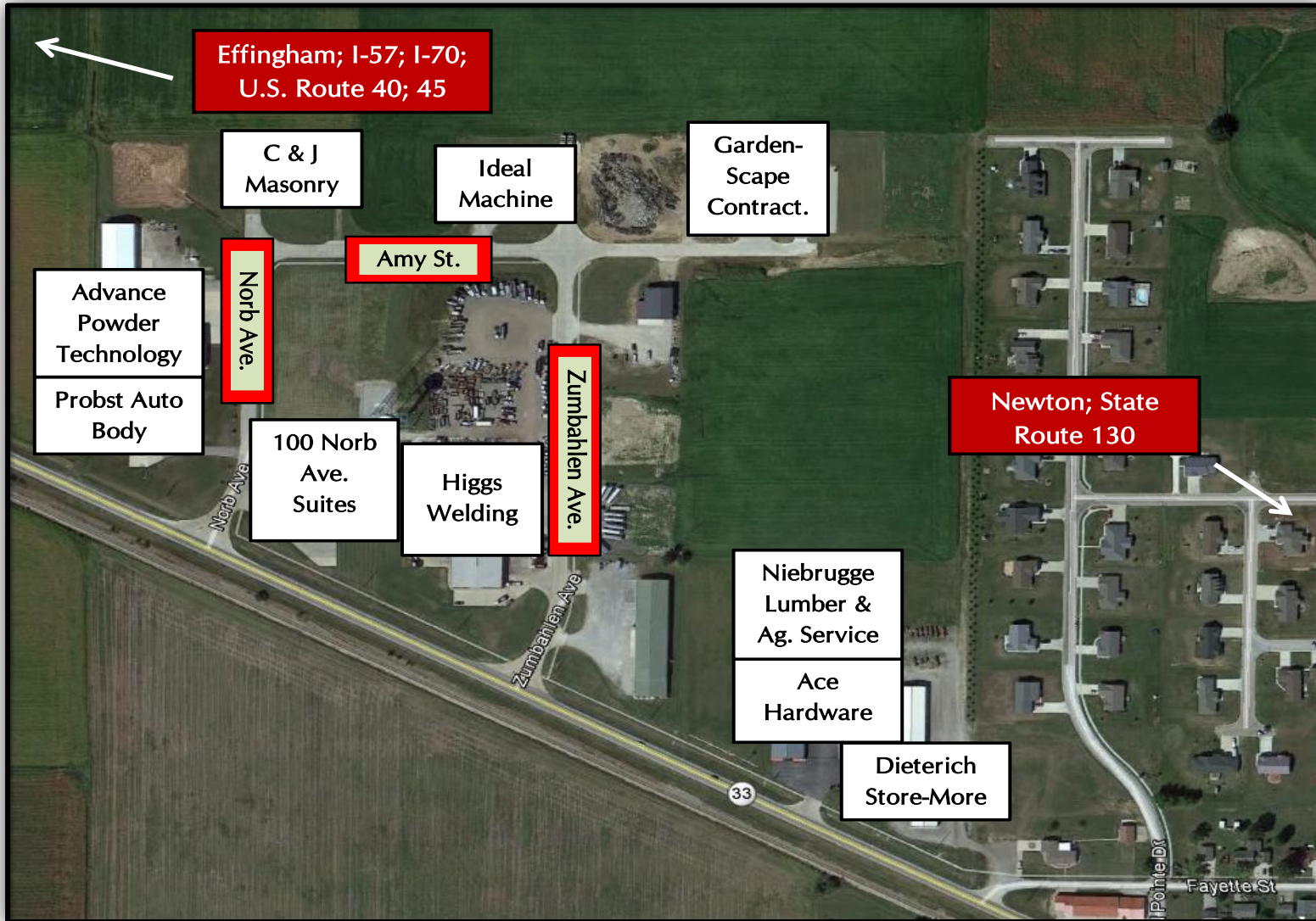
These four parks are each located in highly visible and accessible areas each within direct access to both I-57 and I-70 along with U.S. 40, U.S. 45 and IL 33. These highways provide any Effingham business or industry with first-rate freight truck transportation access to large metropolitan areas across the nation

Figure 4-2: Altamont Industrial Park





**Figure 4-3: Zumbahlen Industrial Park**



**Figure 4-4: Effingham Business Park/South Route 45 Park**

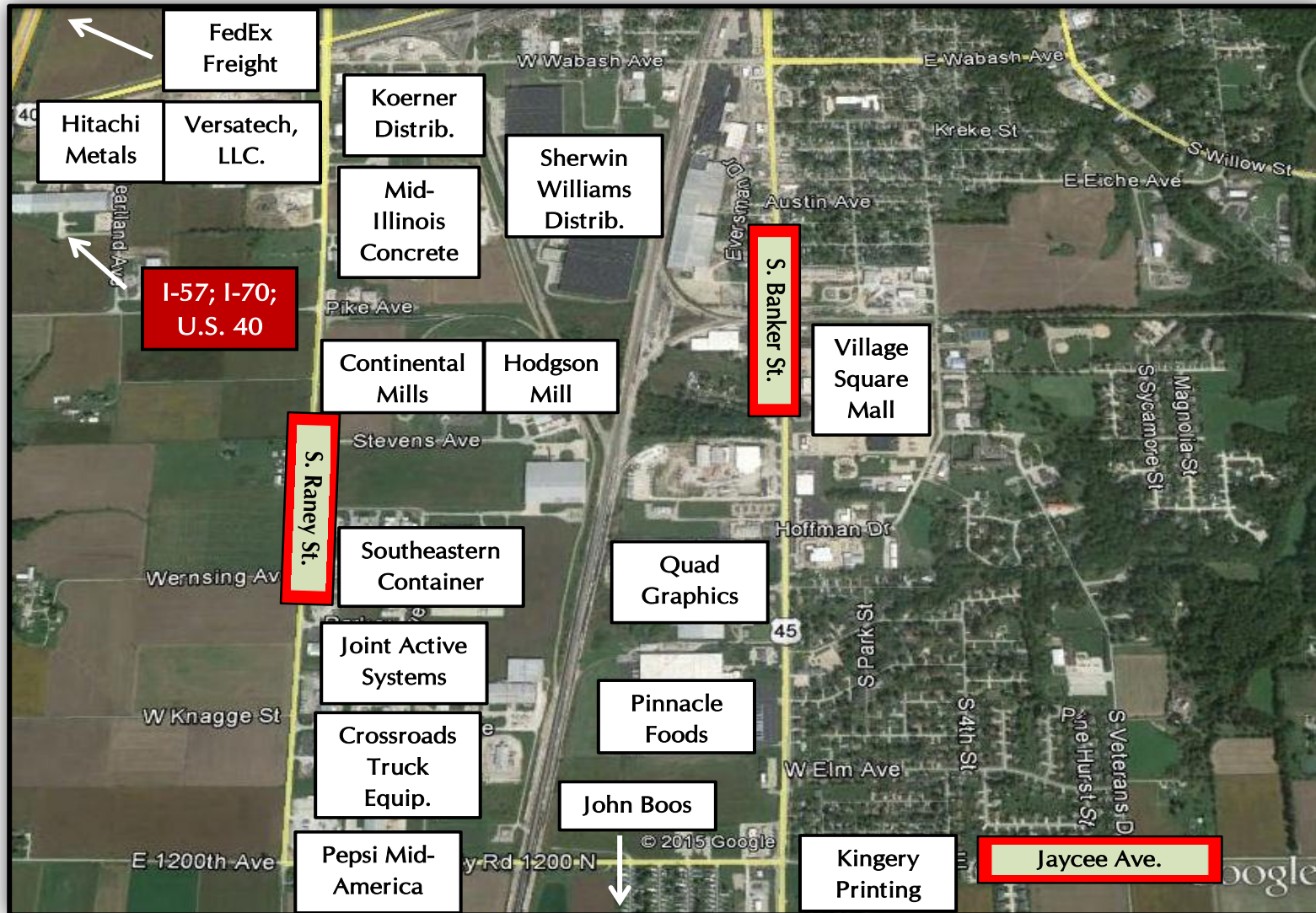




Figure 4-5: Network Centre

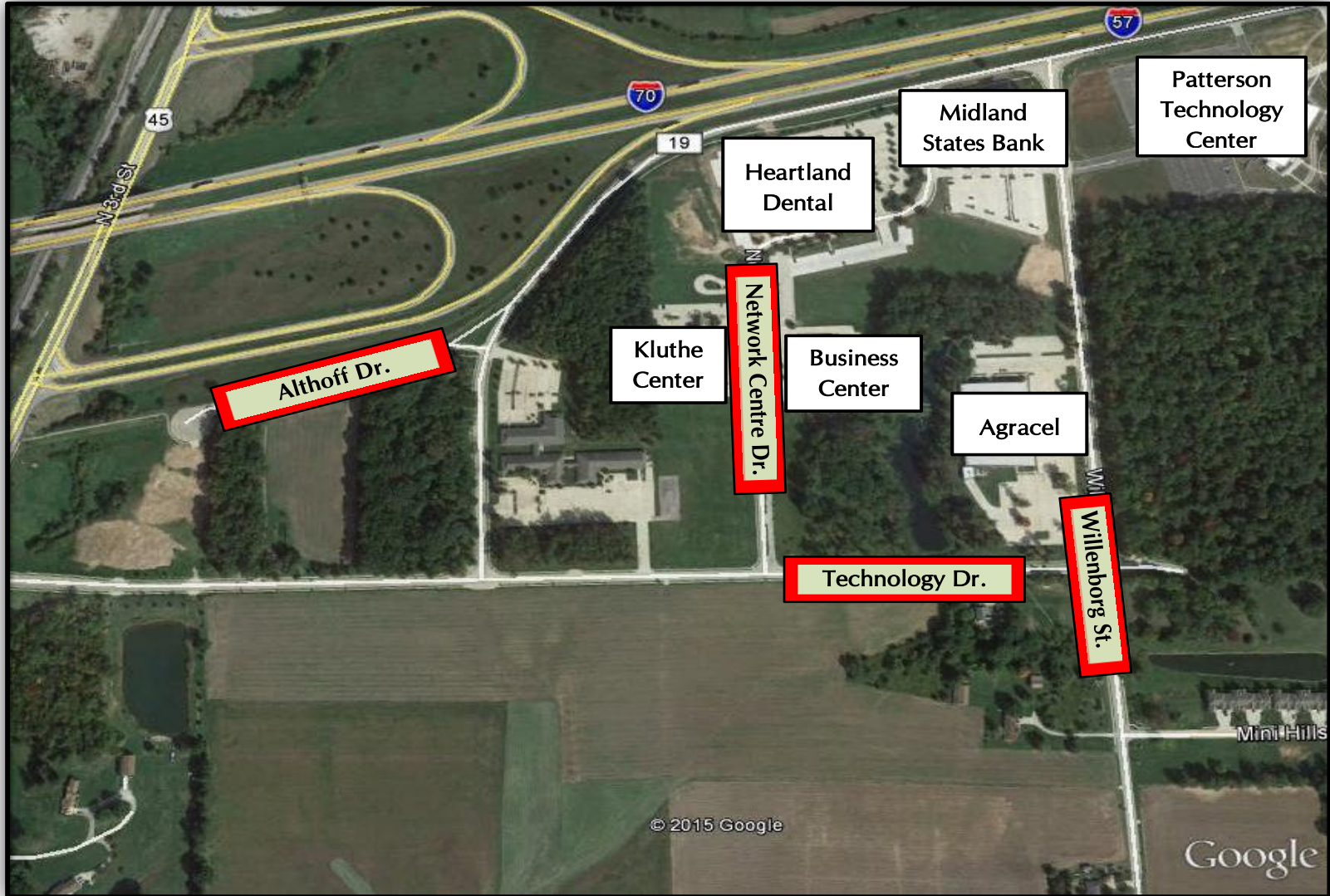


Figure 4-6: American Business Way Park





## e. Effingham County Commodity Exports

As is indicated on **Table 4-1**, Effingham County exported more than 1.3 billion dollars in commodities via freight truck, leading the SCIRPDC Region in that category, and weighing close to 1.4 million tons. The county's top commodity exports included Warehousing; Machinery & Transportation Equipment; Prepared Foods; and Forest & Related Products. These four commodity categories make up for 68% of the total amount of commodity exports for Effingham County in 2012.

**Table 4-1: Effingham County Commodity Exports**

Commodity Category	Millions of Dollars	Tons
Warehousing	312	254,000
Machinery & Transportation Equip.	216	24,000
Prepared Foods	206	424,000
Forest & Related Prod.	164	200,000
Primary Metal & Fabricated Products	95	39,000
Pulp, Paper, Print Material, or Allied Prod.	79	23,000
Livestock & Dairy	71	58,000
Electrical, Scientific, or Medical Equip.	71	13,000
Stone, Ore or Mineral Prod.	25	273,000
Rubber or Misc. Plastic Products	22	6,000
Agricultural Products	17	37,000
Textile Mill, Apparel & Leather Prod.	11	2,000
Chemicals or Allied Products	8	7,000
Misc. Manufactured Products & FAK	7	2,000
Waste or Scrap	6	25,000
Meat and Seafood	3	800
Crude or Natural Gas	.2	1,000
Coal or Coal By-Products	-	-
Ordnance & Accessories	-	-
Petroleum or Coal Products	-	-
Tobacco & Alcohol	-	-
<b>County Totals</b>	<b>1,312</b>	<b>1,388,000</b>

Source: Transearch, 2012

Effingham County accounted for just over 34% of the entire SCIRPDC Region's total commodity exports by value and nearly 45% of the region's total export tonnage, most notably coming from Prepared Foods; Stone, Ore, or Mineral Products; and Warehousing. Effingham County and the region have three of the top four commodity export categories in common including Warehousing; Machinery & Transportation Equipment; and Prepared Foods. Effingham County accounts for 41% of those three commodity exports, and specifically account for 56% of Warehousing as well as 52% of Prepared Foods. Moreover, Effingham County's exports are well-diversified with eight commodity categories exporting more than 70 million dollars. One particular commodity that sets Effingham County apart from the rest is their Forest

**Table 4-2: Effingham County Commodity Location Quotients**

<b>Commodity Category</b>	<b>SCIRPDC Region (\$)</b>	<b>Effingham County (\$)</b>	<b>Location Quotient</b>
Machinery & Transportation Equip.	815	216	.8
Warehousing	560	312	2.4
Electrical, Scientific, or Medical Equip	445	71	.4
Prepared Foods	395	206	1.6
Primary Metal & Fabricated Products	305	95	.9
Stone, Ore or Mineral Products	227	25	.3
Livestock & Dairy	194	71	1.0
Forest & Related Products	185	164	2.6
Rubber or Misc. Plastic Products	152	22	.5
Pulp, Paper, Print Material, or Allied Prod.	141	79	1.5
Chemicals or Allied Products	131	8	.2
Agricultural Products	100	17	.3
Petroleum or Coal Products	84	-	0
Misc. Manufactured Products & FAK	56	7	.5
Waste or Scrap	25	6	.8
Meat and Seafood	15	3	.5
Crude or Natural Gas	13	.2	.03
Textile Mill, Apparel & Leather Products	12	11	2.7
Tobacco & Alcohol	2	-	0
Coal or Coal By-Products	-	-	-
Ordnance & Accessories	-	-	-
<b>Totals</b>	<b>3,855</b>	<b>1,312</b>	

Source: Transearch, 2012; Note: Dollar amounts are measured in millions of dollars.

& Related Products industry which exported 164 million dollars in commodities, with the rest of the region only exporting 21 million, equating to a total of 89% coming from Effingham County alone.

**Table 4-2** displays Effingham County’s commodity export LQs versus the region as a whole. In this particular case, the top location quotients do not necessarily coincide with the top commodity export categories. The top LQs for Effingham County that cross the LQ > 1 threshold includes Textile Mill, Apparel & Leather Products (LQ = 2.7); Forest & Related Products (LQ = 2.6); Warehousing (LQ = 2.4); Prepared Foods (LQ = 1.6); and Pulp, Paper, Print Material, or Allied Products (LQ = 1.5). These five LQs all indicate that, when compared to the region as a whole, these specific industry sectors are well-established exporters that are particularly successful in Effingham County.

The businesses most closely associated with these high LQs would be John Boos & Co, who provides world-renowned wood and stainless steel kitchenware, likely to account for the Forest & Related Products industry. Continental Mills, Hodgson Mill and Pinnacle Foods most likely accounting for the Prepared Foods industry, along with the innumerable amount of other restaurants and eateries. As for the Pulp, Paper, Print Material, or Allied Products category, Kingery Printing as well as Quad Graphics are likely to be the most essential contributors. However, the LQs that may be even more important are those that are close to reaching the 1.0 threshold indicating a great opportunity for expansion and growth.

In the case of Effingham County, those industry sectors or commodity categories include Waste or Scrap (LQ = .8); Machinery & Transportation Equipment (LQ = .8); and Primary Metal & Fabricated Products (LQ = .9). A few of the current businesses that would fit into some of these commodity export categories would be Hitachi Metals; Versatech LLC; John Boos & Co.; among others. These three LQs represent industry sectors that are expanding and can, with thoughtful growth and expansion, become excellent export producing businesses for the county and the entire region.

#### f. Effingham County Commodity Imports

**Table 4-3: Effingham County Commodity Imports**

Commodity Category	Millions of Dollars	Tons
Warehousing	285	232,000
Petroleum or Coal Products	200	221,000
Machinery & Transportation Equip.	176	23,000
Agricultural Products	133	489,000
Primary Metal & Fabricated Products	88	35,000
Electrical, Scientific, or Medical Equip.	80	8,000
Prepared Foods	58	47,000
Forest & Related Prod.	53	96,000
Chemicals or Allied Products	51	16,000
Rubber or Misc. Plastic Products	45	10,000
Pulp, Paper, Print Material, or Allied Prod.	28	12,000
Stone, Ore or Mineral Prod.	23	504,000
Textile Mill, Apparel & Leather Prod.	17	3,000
Livestock & Dairy	16	10,000
Meat and Seafood	16	4,000
Misc. Manufactured Products & FAK	12	2,000
Tobacco & Alcohol	8	7,000
Waste or Scrap	5	18,000
Ordnance & Accessories	.6	30
Coal or Coal By-Products	.1	4,000
Crude or Natural Gas	-	-
<b>County Totals</b>	<b>1,292</b>	<b>1,743,000</b>

Source: Transearch, 2012

**Table 4-3** above displays the total commodity imports for Effingham County in 2012. As shown, Effingham County imported nearly 1.3 billion dollars in commodities weighing almost 1.75 million tons. These figures, combined with the county's total commodity imports, illustrate that the county exported 20 million dollars more in commodities than it imported demonstrating a small balance of trade surplus. In terms of weight, the county imported 355 thousand more tons of commodities than it exported. This difference was made up almost wholly by the import of Agriculture Products, which weighed in at nearly 500 thousand tons, and to equating to 133 million dollars. Since Effingham County only exported 17



million dollars' worth of Agriculture Products, the large amount of imports from this particular commodity makes logical sense.

The pending recruitment of Beck's Superior Hybrids, Inc. into the City of Effingham could, in time, alter the findings relative to Agricultural Products quite sharply. Specifically, increases in Effingham County's Agricultural Products commodity exports would likely in turn increase the commodity or industry sector's LQ relative to the region, and ultimately further diversify not only the county's industry sector, but the regional economy as a whole.

Effingham County's top three commodity imports coincide with the top three commodity imports for the entire SCIRPDC Region. These commodity categories include Warehousing; Petroleum or Coal Products; and Machinery & Transportation Equipment. Effingham County accounts for 44% of the total regional imports in these three particular commodity categories. Overall, when measuring by dollar value, Effingham County accounted for nearly 41% of the region's total commodity imports, and when measured by weight, Effingham County again accounts for 41%. The high figures are not necessarily unexpected since Effingham County is not only the central industry hub of the region, but also the second highest populated county in the SCIRPDC Region, with only Marion County slightly above.

### g. Effingham County Commodity Import Origin and Export Destination

**Table 4-4** displays Effingham County's top five cities and states for both commodity imports and exports. After reviewing table 4-4, and comparing it against the top import origins and export destinations for the region, what can be seen is that in terms of both import and exports, Effingham County has a slightly further reach across the nation than the SCIRPDC Region as a whole. This is not unexpected due to the centralized location that Effingham has regionally and nationally, along with their high volume of national industry chains and businesses.

**Table 4-4: Effingham County Top Import/Export Cities and States**

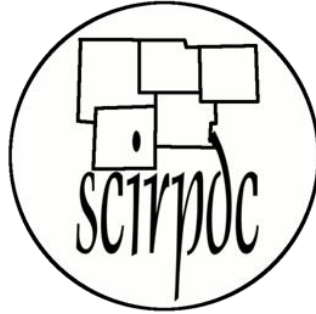
Import Origin		Export Destination	
Top Cities	Top States	Top Cities	Top States
New York, NY	Indiana	St. Louis, MO	Missouri
St. Louis, MO	Missouri	Des Moines, IA	Illinois
Los Angeles, CA	Illinois	New York, NY	Texas
Nashville, TN	New York	Evansville, IN	Iowa
Savannah, GA	Texas	Champaign, IL	Indiana

Source: Transearch, 2012

In terms of Effingham County exports, it becomes clear that several interstates are widely used across Illinois in order to efficiently deliver the county's commodity exports. These include I-57, and U.S. 40 for St. Louis; I-57 for Champaign; I-57 to I-74 and then north to I-80 for Des Moines, Iowa; I-70 for New York; and I-57 to I-64 for Evansville, Indiana. The top states follow a similar pattern of roadway usage with the addition of Texas which would likely utilize I-57 to I-55 to exit the Southern Illinois border before connecting to other closer proximity interstates or major highways near Texas.

When it comes to the county's imports the top states are relatively the same as with the exports, except for New York, which would utilize I-70 to reach Effingham County. Los Angeles would also use I-70, while commodity imports from Nashville, Tennessee, and Savannah, Georgia, would predominately use I-24 to enter southern Illinois connecting then to I-57 or U.S. 45 to reach Effingham County.

Effingham County is currently undergoing an I-57 lane expansion project in order to make freight truck movement more efficient and to deal with the ever-growing freight truck traffic near the City of Effingham. As the growth in freight truck traffic continues to grow in the next several decades, as illustrated in section one of this analysis, other interstate improvement projects within the SCIRPDC Region similar to the one that is currently underway will without a doubt become necessary. In order to ensure that projects such as these are completed in an efficient and timely manner, plans must be put into place years ahead of time to help guarantee successful implementation.



Provided By:  
South Central Illinois Regional Planning & Development Commission  
120 Delmar Avenue  
Suite A  
Salem, Illinois 62881-2000

P: 618-548-4234      F: 618-548-4236

**SCIRPDC Contributing Staff**

**James Patrick**, Executive Director & Project Facilitator / Contributing Author

**Luke Eastin**, Economic Development Planner & Primary Author

Special thanks to the Illinois Department of Transportation and Transearch International for their assistance in the development of this document

Funding Provided By:



Data Provided By:

